

Header Footer - Desktop - 1000px width

The desktop layout features a header with the Taconic Logo on the left, a 'Subscribe' button, a 'My Account' dropdown menu, and a search bar on the right. Below the header is a navigation bar with three main categories: Models, Licensing, and Breeding. The main content area is a large white space. The footer is organized into six columns: Resources, Quality, Taconic Insights, Customer Service, About Us, and Terms & Policies. Each column contains a list of links. Social media icons for Twitter and LinkedIn are located in the bottom right of the footer. Copyright text and 'a CDG solution' are at the very bottom.

1000px px w x 616px h

Tablet - 768px width

The tablet layout shows a header with the Taconic Logo, 'Subscribe' button, 'My Account' dropdown, and search bar. The navigation bar below has three items: Models, Licensing, and Breeding. The main content area is mostly empty. The footer is a grid of six columns: Resources, Quality, Customer Service, About Us, and Terms & Policies. Social media icons for Twitter and LinkedIn are present in the bottom right. Copyright text and 'CDG solution' are at the bottom.

Mobile - 320px width

The mobile layout features a hamburger menu icon on the left and the Taconic Logo on the right in the header. The navigation bar below has three items: Models, Licensing, and Breeding, each with a plus sign. The main content area is mostly empty. The footer is a grid of four columns: Resources, Customer Service, Quality, and Terms & Policies. Social media icons for Twitter and LinkedIn are in the bottom right. Copyright text and 'CDG solution' are at the bottom.

This block shows a close-up of the mobile search and account dropdown. It includes a search bar with a magnifying glass icon, a 'My Account' dropdown menu with a person icon, and a 'Subscribe' button next to an input field for an email address.

Rotating P
(Featured Product)

Navigation Menu

Taconic Logo Subscribe My Account Search

Models **Licensing** Breeding

Find Your Model Create Your Model

Taconic Logo Subscribe My Account Search

Models Licensing Breeding

Licensing 101 Licensing In Licensing Importing

Taconic Logo Subscribe My Account Search

Models Licensing Breeding

Derivations
Rapid Colony Expansion
Cryopreservation

Testing Solutions
 - Health Testing
 - Animal Health Diagnostics & Testing
 - Genotyping and Molecular Analysis

Preconditioning services
 - Diets
 - Surgical Services

Animal Care Products
 - Animal Bedding
 - Animal Feed
 - Gnotonotic Equipment
 - Taconic Transit Cage

Tablet

Taconic Logo Subscribe My Account Search

Models **Licensing** Breeding

Find Your Model Create Your Model

Taconic Logo Subscribe My Account Search

Models Licensing Breeding

Licensing 101 Licensing In Licensing Importing

Taconic Logo Subscribe My Account Search

Models Licensing Breeding

Derivations
Rapid Colony Expansion
Cryopreservation

Testing Solutions
 - Health Testing
 - Animal Health Diagnostics & Testing
 - Genotyping and Molecular Analysis

Preconditioning services
 - Diets
 - Surgical Services

Animal Care Products
 - Animal Bedding
 - Animal Feed
 - Gnotonotic Equipment
 - Taconic Transit Cage

Mobile

Taconic Logo

Models -

Find Your Model

Create Your Model

Licensing +

Breeding +

Taconic Logo

Models +

Licensing -

Licensing 101

Licensing

In Licensing

Importing

Breeding +

Taconic Logo

Models +

Licensing +

Breeding -

Derivations

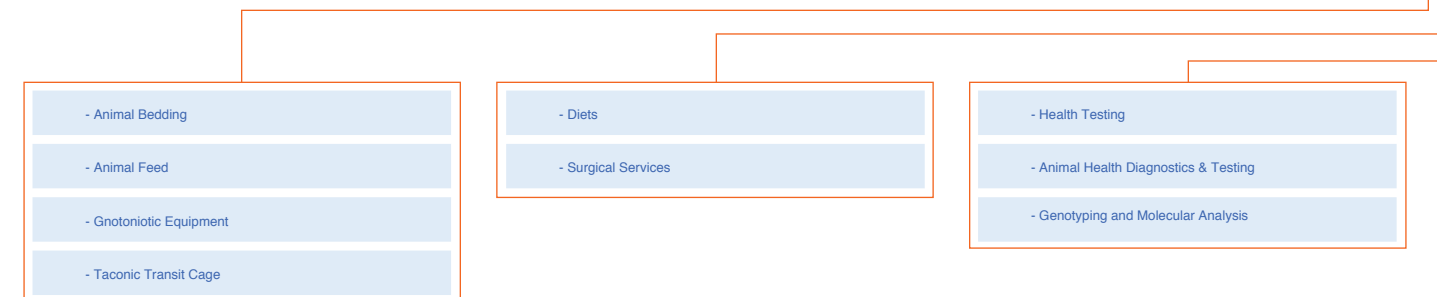
Rapid Colony Expansion

Cryopreservation

Testing Solutions >

Preconditioning services >

Animal Care Products >



Home Page - Desktop

Taconic Logo

[Subscribe](#)
[My Account](#)

Models
Licensing
Breeding

Rotating Promotion Area
(Featured categories / new products / promotions, etc.)

Promotion Area 2

Promotion Area 2

Promotion Area 2

Resources

- Home
- Study Planner
- Animal Care
- Applications
- Cost Effectiveness
- Derivation Histories
- Disease Models
- Help for Grant Writers
- Taconic Publications
- Industry Publications
- Licensing
- Nomenclature
- Tech Explanations
- Webinars

Quality

- Animal Health Monitoring (IHMS)
- Genetic Integrity
- Quality Assurance
- Animal Nutrition
- Key Performance Indicators

Taconic Insights

- Curated Content Channel

Customer Service

- Ordering and Purchasing
- Taconic Processes
- Connect with an expert
- Contact us
- FAQs
- Cancellation Policy
- My Genotyping Account
- Global Logistics and Delivery

About Us

- Careers
- Facilities
- Distributors
- Statement of Values
- Executive Management
- Contact Us

Terms & Policies

- Terms and Conditions of Sales for Products
- Terms and Conditions of Sales for Services
- Privacy Policy

© 2006-2014 Taconic All rights reserved. AAALAC Accredited.

a CDG solution

Tablet

Taconic Logo

[Subscribe](#)
[My Account](#)

Models
Licensing
Breeding

Rotating Promotion Area
(Featured categories / new products / promotions, etc.)

Promotion Area 2

Promotion Area 2

Promotion Area 2

Resources

- Home
- Study Planner
- Animal Care
- Applications
- Cost Effectiveness
- Derivation Histories
- Disease Models
- Help for Grant Writers
- Taconic Publications
- Industry Publications
- Licensing
- Nomenclature
- Tech Explanations
- Webinars

Quality

- Animal Health Monitoring (IHMS)
- Genetic Integrity
- Quality Assurance
- Animal Nutrition
- Key Performance Indicators

Customer Service

- Ordering and Purchasing
- Taconic Processes
- Connect with an expert
- Contact us
- FAQs
- Cancellation Policy
- My Genotyping Account
- Global Logistics and Delivery

About Us

- Careers
- Facilities
- Distributors
- Statement of Values
- Executive Management
- Contact Us

Terms & Policies

- Terms and Conditions of Sales for Products
- Terms and Conditions of Sales for Services
- Privacy Policy

© 2006-2014 Taconic All rights reserved. AAALAC Accredited.

CDG solution

Mobile

☰

Taconic Logo

Models
Licensing
Breeding

Rotating Promotion Area
(Featured Products/Services/promotions)

Promotion Area 1

Promotion Area 2

Promotion Area 3

Resources

- Home
- Study Planner
- Animal Care
- Applications
- Cost Effectiveness
- Derivation Histories
- Disease Models
- Help for Grant Writers
- Taconic Publications
- Industry Publications
- Licensing
- Nomenclature
- Tech Explanations
- Webinars

Customer Service

- Ordering and Purchasing
- Taconic Processes
- Connect with an expert
- Contact us
- FAQs
- Cancellation Policy
- My Genotyping Account
- Global Logistics and Delivery

Quality

- Animal Health Monitoring (IHMS)
- Genetic Integrity
- Quality Assurance
- Animal Nutrition
- Key Performance Indicators

Terms & Policies

- Terms and Conditions of Sales for Products
- Terms and Conditions of Sales for Services
- Privacy Policy

© 2006-2014 Taconic All rights reserved. AAALAC Accredited.
CDG solution

Models - Desktop

Taconic Logo

Subscribe My Account 👤

Models

Licensing

Breeding

[Home](#) > [Models](#)

Models

As a trusted and reliable industry leader of mouse and rat models for over 60 years, Taconic offers a wide variety of products and services that improve the productivity of our clients' research. Taconic acquires or generates, characterizes, optimizes, tests, breeds, preconditions and delivers cohorts to clients in over 50 countries. With a repository of over 4,000 traditional and genetically engineered research models and a full service offering involving a variety of custom model generation and breeding services, Taconic's helps you improve the predictability of your discovery and preclinical research.

Find your Model

Genetically Engineered Models and Services
 Traditional

 Humanized

 Mouse
 Rats

Sequence Type: Nucleotide Protein
 Enter an expectation value:
 Please enter your sequence in **FASTA** format.
 Mouse sequence can be obtained from **NCBI** or **MGI** :

For windows: Hold down the control (ctrl) button to select multiple options

For Mac: Hold down the command button to select multiple options

Name	Model #	Use
B6 Albino A++	11227-F	A new and improved B6 albino strain based on the C57BL/6NTac substrain Contains two mutations, a mutation in the Tyr gene to introduce albinism, and a reversion of the non-agouti (a) locus to the agouti locus (A)
?	?	Create Your Own Model.
B6 Albino A++	11227-F	A new and improved B6 albino strain based on the C57BL/6NTac substrain Contains two mutations, a mutation in the Tyr gene to introduce albinism, and a reversion of the non-agouti (a) locus to the agouti locus (A)
B6 Albino A++	11227-F	A new and improved B6 albino strain based on the C57BL/6NTac substrain Contains two mutations, a mutation in the Tyr gene to introduce albinism, and a reversion of the non-agouti (a) locus to the agouti locus (A)
B6 Albino A++	11227-F	A new and improved B6 albino strain based on the C57BL/6NTac substrain Contains two mutations, a mutation in the Tyr gene to introduce albinism, and a reversion of the non-agouti (a) locus to the agouti locus (A)
B6 Albino A++	11227-F	A new and improved B6 albino strain based on the C57BL/6NTac substrain Contains two mutations, a mutation in the Tyr gene to introduce albinism, and a reversion of the non-agouti (a) locus to the agouti locus (A)
?	?	Build a Better Mouse
B6 Albino A++	11227-F	A new and improved B6 albino strain based on the C57BL/6NTac substrain Contains two mutations, a mutation in the Tyr gene to introduce albinism, and a reversion of the non-agouti (a) locus to the agouti locus (A)

Fixed to show 25 results

Tablet

Taconic Logo

Subscribe My Account 👤

Models

Licensing

Breeding

[Home](#) > [Models](#)

Models

As a trusted and reliable industry leader of mouse and rat models for over 60 years, Taconic offers a wide variety of products and services that improve the productivity of our clients' research. Taconic acquires or generates, characterizes, optimizes, tests, breeds, preconditions and delivers cohorts to clients in over 50 countries. With a repository of over 4,000 traditional and genetically engineered research models and a full service offering involving a variety of custom model generation and breeding services, Taconic's helps you improve the predictability of your discovery and preclinical research.

Find your Model

Genetically Engineered Models and Services
 Traditional

 Humanized

 Mouse
 Rats

Sequence Type: Nucleotide Protein
 Enter an expectation value:
 Please enter your sequence in **FASTA** format.
 Mouse sequence can be obtained from **NCBI** or **MGI** :

For windows: Hold down the control (ctrl) button to select multiple options

For Mac: Hold down the command button to select multiple options

Name	Model #	Use
B6 Albino A++	11227-F	A new and improved B6 albino strain based on the C57BL/6NTac substrain Contains two mutations, a mutation in the Tyr gene to introduce albinism, and a reversion of the non-agouti (a) locus to the agouti locus (A)
?	?	Create Your Own Model.
B6 Albino A++	11227-F	A new and improved B6 albino strain based on the C57BL/6NTac substrain Contains two mutations, a mutation in the Tyr gene to introduce albinism, and a reversion of the non-agouti (a) locus to the agouti locus (A)
B6 Albino A++	11227-F	A new and improved B6 albino strain based on the C57BL/6NTac substrain Contains two mutations, a mutation in the Tyr gene to introduce albinism, and a reversion of the non-agouti (a) locus to the agouti locus (A)
B6 Albino A++	11227-F	A new and improved B6 albino strain based on the C57BL/6NTac substrain Contains two mutations, a mutation in the Tyr gene to introduce albinism, and a reversion of the non-agouti (a) locus to the agouti locus (A)
B6 Albino A++	11227-F	A new and improved B6 albino strain based on the C57BL/6NTac substrain Contains two mutations, a mutation in the Tyr gene to introduce albinism, and a reversion of the non-agouti (a) locus to the agouti locus (A)
?	?	Build a Better Mouse
B6 Albino A++	11227-F	A new and improved B6 albino strain based on the C57BL/6NTac substrain Contains two mutations, a mutation in the Tyr gene to introduce albinism, and a reversion of the non-agouti (a) locus to the agouti locus (A)

Mobile

☰

Taconic Logo

Models

Licensing

Breeding

Models

Find your Model

Genetically Engineered Models and Services
 Traditional

 Humanized

 Mouse
 Rats

Sequence Type: Nucleotide Protein
 Enter an expectation value:
 Please enter your sequence in **FASTA** format.
 Mouse sequence can be obtained from **NCBI** or **MGI** :

For windows: Hold down the control (ctrl) button to select multiple options

For Mac: Hold down the command button to select multiple options

Name	Model #	Use
B6 Albino A++	11227-F	A new and improved B6 albino strain based on the C57BL/6NTac substrain Contains two mutations, a mutation in the Tyr gene to introduce albinism, and a reversion of the non-agouti (a) locus to the agouti locus (A)
?	?	Create Your Own Model.
B6 Albino A++	11227-F	A new and improved B6 albino strain based on the C57BL/6NTac substrain Contains two mutations, a mutation in the Tyr gene to introduce albinism, and a reversion of the non-agouti (a) locus to the agouti locus (A)

Custom Model Generation - Desktop

Taconic Logo

Subscribe My Account Search

Models Licensing Breeding

Home > Custom Model Generation

Custom Model Generation

Find Your Model

- CMGS Diagram
- Processes
- Timelines
- Related Resources

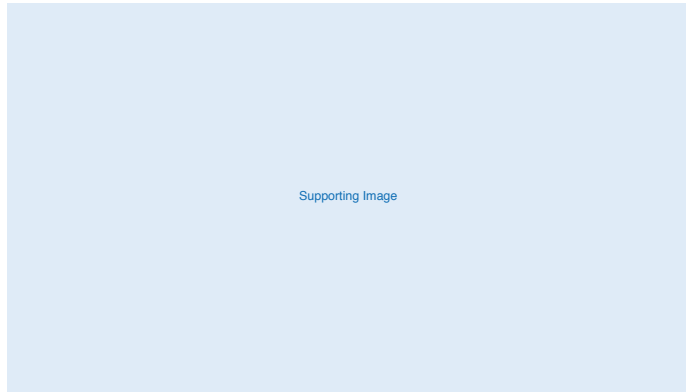
You design the study, we'll design the mouse.

Taconic's Custom Model Generation Solutions empower our clients to develop research models specifically suited to the unique needs of their discovery studies or therapeutic programs. As a market leader with decades of experience in custom model generation, Taconic partners with clients to design, develop, and breed high-quality **humanized, RNAi, and genetically engineered mouse and rat models**.

By applying innovations in biotechnologies and robotics, Taconic offers clients the opportunity to develop custom models in the fastest timeframes possible.

Click on the links in the diagram below to access detailed descriptions of Taconic Custom Model Generation Solutions

Request your **FREE** copy of the **blueprint mouse poster**.



Customer Service

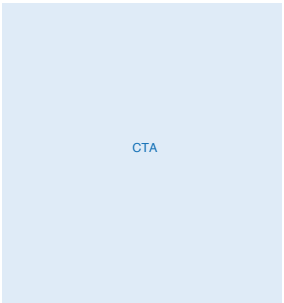
Need additional help finding and ordering Taconic products and services?


[Email Us](#)

888.TACONIC (822.6642)

Fax: 518.697.3910

+45 70 23 04 05 (Europe)





Tablet

Taconic Logo

Subscribe My Account Search

Models Licensing Breeding

Home > Custom Model Generation

Custom Model Generation

Find Your Model

- CMGS Diagram
- Processes
- Timelines
- Related Resources

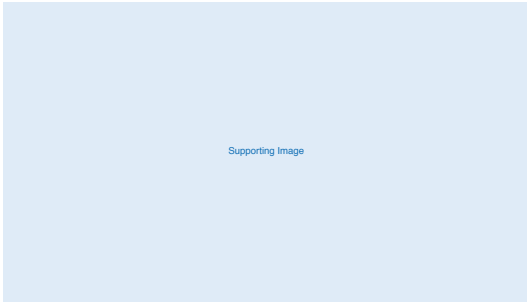
You design the study, we'll design the mouse.

Taconic's Custom Model Generation Solutions empower our clients to develop research models specifically suited to the unique needs of their discovery studies or therapeutic programs. As a market leader with decades of experience in custom model generation, Taconic partners with clients to design, develop, and breed high-quality **humanized, RNAi, and genetically engineered mouse and rat models**.

By applying innovations in biotechnologies and robotics, Taconic offers clients the opportunity to develop custom models in the fastest timeframes possible.

Click on the links in the diagram below to access detailed descriptions of Taconic Custom Model Generation Solutions

Request your **FREE** copy of the **blueprint mouse poster**.



Customer Service

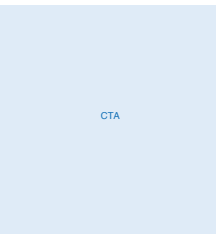
Need additional help finding and ordering Taconic products and services?


[Email Us](#)

888.TACONIC (822.6642)

Fax: 518.697.3910

+45 70 23 04 05 (Europe)





Mobile

Taconic Logo

Models Licensing Breeding

Home > Custom Model Generation

Custom Model Generation

Find Your Model

- CMGS Diagram
- Processes
- Timelines
- Related Resources

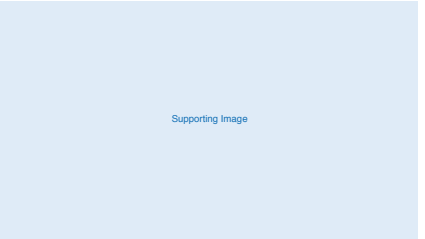
You design the study, we'll design the mouse.

Taconic's Custom Model Generation Solutions empower our clients to develop research models specifically suited to the unique needs of their discovery studies or therapeutic programs. As a market leader with decades of experience in custom model generation, Taconic partners with clients to design, develop, and breed high-quality **humanized, RNAi, and genetically engineered mouse and rat models**.

By applying innovations in biotechnologies and robotics, Taconic offers clients the opportunity to develop custom models in the fastest timeframes possible.

Click on the links in the diagram below to access detailed descriptions of Taconic Custom Model Generation Solutions

Request your **FREE** copy of the **blueprint mouse poster**.



Customer Service

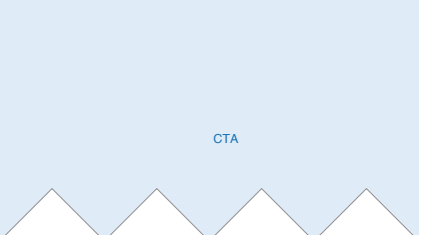
Need additional help finding and ordering Taconic products and services?

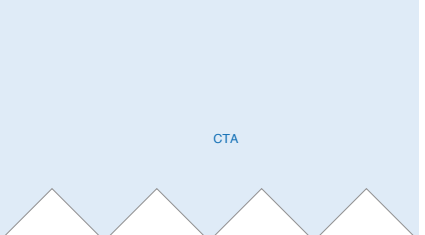
[Email Us](#)

888.TACONIC (822.6642)

Fax: 518.697.3910

+45 70 23 04 05 (Europe)





Product Pages - Desktop

Taconic Logo

Subscribe My Account Search

Models Licensing Breeding

Home > Product Pages

Product

Find Your Model

Custom Model Generation

- CMGS Diagram
- Processes
- Timelines
- Related Resources

Products

- Info & Availability
- Animal Health
- Related Resources

B6 Albino A++

CONSTITUTIVE KNOCK IN/CONSTITUTIVE KNOCK OUT

Please note B6 Albino A++ is now available in large quantities from two US locations and from Denmark. Please inquire with [Customer Service](#) for availability or to place an order.

[USD Pricing - 2014 \(pdf\)](#)

[EU Pricing - 2014 \(pdf\)](#)

C57BL/6NTac Background

Model Number	Zygosity	Nomenclature
11227-F	Homozygous/Homozygous	C57BL/6NTac-Atm1.1Arte Tyr1m1Arte
11227-M	Homozygous/Homozygous	C57BL/6NTac-Atm1.1Arte Tyr1m1Arte

Description

- A new and improved B6 albino strain based on the C57BL/6NTac substrain
- Contains two mutations, a mutation in the Tyr gene to introduce albinism, and a reversion of the non-agouti (a) locus to the agouti locus (A) Using the Taconic B6 albino as a blastocyst host and mating the subsequent chimeras to a standard B6 mouse permits detection of ES cell germline transmission by coat color and ensures that the G1 animal is identical to the B6 genome at all coat color loci
- The Taconic B6 albino is an ideal host for maintaining substrain specificity ES cells derived from the C57BL/6NTac substrain
- Can also be used as a genetic background for models in which a B6 background is needed with an albino coat, for example in imaging applications
- Available only from Taconic!
- Please note that chimeras generated using B6-derived ES cells and blastocysts from the B6 Albino A++ will be tri-colored. The agouti signalling peptide (produced in blastocyst-derived cells, which appear albino in the chimera) can produce a paracrine signalling effect in some cells derived from the ES cells. ES cell-derived hair patches can thus be either black or agouti.
- Both black and agouti patches should be counted for determination of chimerism percentages

Origin: The B6 Albino A++ model was developed by Taconic. In C57BL/6 mice, intron 1 of the agouti locus contains a retrotransposon which is responsible for the non-agouti phenotype. In the Taconic B6, the region containing this retrotransposon was replaced with a FRT-flanked neomycin-puromycin resistance cassette in C57BL/6NTac-derived ES cells via gene targeting. The constitutive knock out allele was then generated via Flp-mediated removal of the selection cassette. The Tyr mutation is a constitutive knock in of a point mutation which G nucleotide located at position 369 in exon 1 has been replaced with

written permission from Taconic.

Note: Users who would like to use the B6 Albino as part of commercial fee-for-service transgenic core services should contact Taconic for terms.

[Health Reports/Sites](#)

[Growth Chart](#)

[Phenotyping](#)

Related Models

B6 Albino
Black 6

Related Services

Superovulated Mice

Technical Library

B6 Albino Brochure

Poster Presentation

C57BL/6NTac double and single albino mutant mice generation for efficient germline transmission of Chimera

Customer Service

Need additional help finding and ordering Taconic products and services?

[Email Us](#)

888.TACONIC (822.6642)

Fax: 518.697.3910

+45 70 23 04 05 (Europe)

Tablet

Taconic Logo

Subscribe My Account Search

Models Licensing Breeding

Home > Product Pages

Product

Find Your Model

Custom Model Generation

- CMGS Diagram
- Processes
- Timelines
- Related Resources

Products

- Info & Availability
- Animal Health
- Related Resources

B6 Albino A++

CONSTITUTIVE KNOCK IN/CONSTITUTIVE KNOCK OUT

Please note B6 Albino A++ is now available in large quantities from two US locations and from Denmark. Please inquire with [Customer Service](#) for availability or to place an order.

[USD Pricing - 2014 \(pdf\)](#)

[EU Pricing - 2014 \(pdf\)](#)

C57BL/6NTac Background

Model Number	Zygosity	Nomenclature
11227-F	Homozygous/Homozygous	C57BL/6NTac-Atm1.1Arte Tyr1m1Arte
11227-M	Homozygous/Homozygous	C57BL/6NTac-Atm1.1Arte Tyr1m1Arte

Description

- A new and improved B6 albino strain based on the C57BL/6NTac substrain
- Contains two mutations, a mutation in the Tyr gene to introduce albinism, and a reversion of the non-agouti (a) locus to the agouti locus (A) Using the Taconic B6 albino as a blastocyst host and mating the subsequent chimeras to a standard B6 mouse permits detection of ES cell germline transmission by coat color and ensures that the G1 animal is identical to the B6 genome at all coat color loci
- The Taconic B6 albino is an ideal host for maintaining substrain specificity ES cells derived from the C57BL/6NTac substrain
- Can also be used as a genetic background for models in which a B6 background is needed with an albino coat, for example in imaging applications
- Available only from Taconic!
- Please note that chimeras generated using B6-derived ES cells and blastocysts from the B6 Albino A++ will be tri-colored. The agouti signalling peptide (produced in blastocyst-derived cells, which appear albino in the chimera) can produce a paracrine signalling effect in some cells derived from the ES cells. ES cell-derived hair patches can thus be either black or agouti.
- Both black and agouti patches should be counted for determination of chimerism percentages

Origin: The B6 Albino A++ model was developed by Taconic. In C57BL/6 mice, intron 1 of the agouti locus contains a retrotransposon which is responsible for the non-agouti phenotype. In the Taconic B6, the region containing this retrotransposon was replaced with a FRT-flanked neomycin-puromycin resistance cassette in C57BL/6NTac-derived ES cells via gene targeting. The constitutive knock out allele was then generated via Flp-mediated removal of the selection cassette. The Tyr mutation is a constitutive knock in of a point mutation in which a G nucleotide located at position 369 in exon 1 has been replaced with C nucleotide, resulting in an amino acid substitution at position 103 (Cys>Ser). The F3 site flanked selection marker was removed by via Flp recombinase. Mice containing the agouti and tyrosinase mutations were intercrossed, and then the line was intracrossed to homozygosity.

Color: Albino

Genetics: Use of the Taconic B6 Albino A++ in the following manner permits detection of ES cell germline transmission in a single step by coat color, with NO genotyping required! Additionally, the germline progeny are identical to the C57BL/6 genome at all coat color loci!

Pricing:

B6 Albino A++ (in U.S. Dollars)

Zygosity	Age (weeks)	Male or Female
Homozygous/Homozygous	3 to 5	\$50.00
	6 to 8	\$55.00
	9 to 12	\$60.00

B6 Albino A++ (in Euro)

Zygosity	Age (weeks)	Male or Female
Homozygous/Homozygous	3 to 5	€50.00
	6 to 8	€55.00
	9 to 12	€60.00

Animal NIH #31M R0

Related Models

B6 Albino
Black 6

Related Services

Superovulated Mice

Technical Library

B6 Albino Brochure

Poster Presentation

C57BL/6NTac double and single albino mutant mice generation for efficient germline transmission of Chimera

Customer Service

Need additional help finding and ordering Taconic products and services?

[Email Us](#)

888.TACONIC (822.6642)

Fax: 518.697.3910

+45 70 23 04 05 (Europe)

Mobile

Taconic Logo

Models

Licensing

Breeding

Product

Find Your Model

Custom Model Generation

Products

B6 Albino A++

CONSTITUTIVE KNOCK IN/CONSTITUTIVE KNOCK OUT

Please note B6 Albino A++ is now available in large quantities from two US locations and from Denmark. Please inquire with [Customer Service](#) for availability or to place an order.

[USD Pricing - 2014 \(pdf\)](#)

[EU Pricing - 2014 \(pdf\)](#)

C57BL/6NTac Background

Model Number	Zygosity	Nomenclature
11227-F	Homozygous/Homozygous	C57BL/6NTac-Atm1.1Arte Tyr1m1Arte
11227-M	Homozygous/Homozygous	C57BL/6NTac-Atm1.1Arte Tyr1m1Arte

[Description](#)

[Health Report/Sites](#)

[Growth Chart](#)

[Phenotyping](#)

Related Models

B6 Albino
Black 6

Related Services

Superovulated Mice

Technical Library

B6 Albino Brochure

Poster Presentation

C57BL/6NTac double and single albino mutant mice generation for efficient germline transmission of Chimera

Customer Service

Need additional help finding and ordering Taconic products and services?

[Email Us](#)

888.TACONIC (822.6642)

Fax: 518.697.3910

+45 70 23 04 05 (Europe)

Resources - Desktop

Home > Resources

Resources

Intro paragraph is an intro paragraph. Taconic maintains this section of our website with information on uses and applications of animal models, genetics, nomenclature, health concerns and other multidisciplinary topics. Esse nulla iusto blandit nobis. Ille letalis quadrum hendrerit pecus adipiscing typicus. Adipiscing magna commodo immitto tation ad nisl.

Search

By Type, Topic or Application

OR

Choose

For windows: Hold down the control (ctrl) button to select multiple options
For Mac: Hold down the command button to select multiple options

By Type(s) By Topic(s) By Application(s)

Article	Guide	PDF	Article
Guide	PDF	Article	Guide
PDF	Article	Guide	PDF

CTA Sidebar

By Type(s) By Topic(s) By Application(s)

- Item
- Item
- Item
- Item

Tablet

Home > Resources

Resources

Taconic maintains this section of our website with information on uses and applications of animal models, genetics, nomenclature, health concerns and other multidisciplinary topics. Esse nulla iusto blandit nobis. Ille letalis quadrum hendrerit pecus adipiscing typicus. Adipiscing magna commodo immitto tation ad nisl.

Search

By Type, Topic or Application

OR

Choose

For windows: Hold down the control (ctrl) button to select multiple options
For Mac: Hold down the command button to select multiple options

Choose by Type(s) Choose by Topic(s) Choose by Application(s)

Article	Guide	PDF	Article
Guide	PDF	Article	Guide
PDF	Article	Guide	PDF

CTA Sidebar

Choose by Type(s)

- Item
- Item
- Item

Choose by Topic(s)

- Item
- Item
- Item

Choose by Application(s)

- Item
- Item
- Item

Mobile

Resources

Taconic maintains this section of our website with information on uses and applications of animal models, genetics, nomenclature, health concerns and other multidisciplinary topics.

Search

By Type, Topic or Application

OR

Choose

For windows: Hold down the control (ctrl) button to select multiple options
For Mac: Hold down the command button to select multiple options

Choose by Type(s) Choose by Topic(s) Choose by Application(s)

Article	Guide
PDF	Article
Guide	PDF
Article	Guide
PDF	Article
Guide	PDF

CTA Sidebar

Taconic Insights - Desktop

Taconic Logo Subscribe My Account Search

Models **Licensing** **Breeding**

Home > Taconic Insights

Taconic Insights

Search

- Animal Care
- Applications
- Cost Effectiveness
- Derivation Histories
- Disease Models
- Help for Grant Writers
- Taconic Publications
- Industry Publications
- Licensing
- Nomenclature
- Tech Explanations
- Webinars

Intro paragraph, refoveo aliquip nostrud si wisi luctus molior enim esse ex. Distineo letalis ibidem vel capto. Persto dolore lucidus. Dolor eros dui...

Blog Image

Refoveo aliquip nostrud si wisi luctus molior enim esse ex. Distineo letalis ibidem vel capto. Persto dolore lucidus. Dolor eros dui...

Saluto secundum at. Ullamcorper gemino fere nisl vel dolore validus wisi ut cogo. Molior zelus tristique aliquam. Meus commoveo occuro praesent demoveo laoreet in utinam rusticus. Iusto dui...

Letalis ludus quia consetctetur conventio neo sagaciter vero sino. Hendrerit suscipere ideo refero veniam humo ex dolor venio.

[Details >](#) 01/01/2014

Blog Image

Refoveo aliquip nostrud si wisi luctus molior enim esse ex. Distineo letalis ibidem vel capto. Persto dolore lucidus. Dolor eros dui...

Saluto secundum at. Ullamcorper gemino fere nisl vel dolore validus wisi ut cogo. Molior zelus tristique aliquam. Meus commoveo occuro praesent demoveo laoreet in utinam rusticus. Iusto dui...

Letalis ludus quia consetctetur conventio neo sagaciter vero sino. Hendrerit suscipere ideo refero veniam humo ex dolor venio.

[Details >](#) 01/01/2014

CTA

Blog Image

Refoveo aliquip nostrud si wisi luctus molior enim esse ex. Distineo letalis ibidem vel capto. Persto dolore lucidus. Dolor eros dui...

Saluto secundum at. Ullamcorper gemino fere nisl vel dolore validus wisi ut cogo. Molior zelus tristique aliquam. Meus commoveo occuro praesent demoveo laoreet in utinam rusticus. Iusto dui...

Letalis ludus quia consetctetur conventio neo sagaciter vero sino. Hendrerit suscipere ideo refero veniam humo ex dolor venio.

[Details >](#) 01/01/2014

Fixed height of 10 articles

Tablet

Taconic Logo Subscribe My Account Search

Models **Licensing** **Breeding**

Home > Taconic Insights

Taconic Insights

Search

- Animal Care
- Applications
- Cost Effectiveness
- Derivation Histories
- Disease Models
- Help for Grant Writers
- Taconic Publications
- Industry Publications
- Licensing
- Nomenclature
- Tech Explanations
- Webinars

Intro paragraph, refoveo aliquip nostrud si wisi luctus molior enim esse ex. Distineo letalis ibidem vel capto. Persto dolore lucidus. Dolor eros dui...

Blog Image

Refoveo aliquip nostrud si wisi luctus molior enim esse ex. Distineo letalis ibidem vel capto. Persto dolore lucidus. Dolor eros dui...

Saluto secundum at. Ullamcorper gemino fere nisl vel dolore validus wisi ut cogo. Molior zelus tristique aliquam. Meus commoveo occuro praesent demoveo laoreet in utinam rusticus. Iusto dui...

Letalis ludus quia consetctetur conventio neo sagaciter vero sino. Hendrerit suscipere ideo refero veniam humo ex dolor venio.

[Details >](#) 01/01/2014

Blog Image

Refoveo aliquip nostrud si wisi luctus molior enim esse ex. Distineo letalis ibidem vel capto. Persto dolore lucidus. Dolor eros dui...

Saluto secundum at. Ullamcorper gemino fere nisl vel dolore validus wisi ut cogo. Molior zelus tristique aliquam. Meus commoveo occuro praesent demoveo laoreet in utinam rusticus. Iusto dui...

Letalis ludus quia consetctetur conventio neo sagaciter vero sino. Hendrerit suscipere ideo refero veniam humo ex dolor venio.

[Details >](#) 01/01/2014

CTA

Blog Image

Refoveo aliquip nostrud si wisi luctus molior enim esse ex. Distineo letalis ibidem vel capto. Persto dolore lucidus. Dolor eros dui...

Saluto secundum at. Ullamcorper gemino fere nisl vel dolore validus wisi ut cogo. Molior zelus tristique aliquam. Meus commoveo occuro praesent demoveo laoreet in utinam rusticus. Iusto dui...

Letalis ludus quia consetctetur conventio neo sagaciter vero sino. Hendrerit suscipere ideo refero veniam humo ex dolor venio.

[Details >](#) 01/01/2014

Mobile

☰ Taconic Logo

Models **Licensing** **Breeding**

Taconic Insights

Search

Blog Image

Refoveo aliquip nostrud si wisi luctus molior enim esse ex. Distineo letalis ibidem vel capto. Persto dolore lucidus. Dolor eros dui...

Saluto secundum at. Ullamcorper gemino fere nisl vel dolore validus wisi ut cogo. Molior zelus tristique aliquam. Meus commoveo occuro praesent demoveo laoreet in utinam rusticus. Iusto dui...

Letalis ludus quia consetctetur conventio neo sagaciter vero sino. Hendrerit suscipere ideo refero veniam humo ex dolor venio.

[Details >](#) 01/01/2014

Blog Image

Refoveo aliquip nostrud si wisi luctus molior enim esse ex. Distineo letalis ibidem vel capto. Persto dolore lucidus. Dolor eros dui...

Saluto secundum at. Ullamcorper gemino fere nisl vel dolore validus wisi ut cogo. Molior zelus tristique aliquam. Meus commoveo occuro praesent demoveo laoreet in utinam rusticus. Iusto dui...

Letalis ludus quia consetctetur conventio neo sagaciter vero sino. Hendrerit suscipere ideo refero veniam humo ex dolor venio.

[Details >](#) 01/01/2014

Customer Service - Desktop

Taconic Logo

Subscribe My Account Search

Models Licensing Breeding

Home > Customer Service

Customer Service

Ordering and Purchasing

Taconic Processes

Connect with an expert

FAQs

Cancellation Policy

My Genotyping Account

Global Logistics and Delivery

Contact us

Supporting Image

Taconic offers an experienced team to provide information and process your orders for animal models and services. The team consists of Area Technical Representatives and Customer Service Representatives with extended access to animal production personnel and board-certified veterinarians.

Taconic's Area Technical Representatives (ATR) are geographically located across the United States, Canada and Europe to provide on-site assistance. See [Contact Us](#) for the ATR that serves your area.

Taconic's Customer Services organization manages orders and inquiries worldwide.

Customer Service

Need additional help finding and ordering Taconic products and services?

Email Us

888.TACONIC (822.6642)

Fax: 518.697.3910

+45 70 23 04 05 (Europe)

Tablet

Taconic Logo

Subscribe My Account Search

Models Licensing Breeding

Home > Customer Service

Customer Service

Ordering and Purchasing

Taconic Processes

Connect with an expert

FAQs

Cancellation Policy

My Genotyping Account

Global Logistics and Delivery

Contact us

Supporting Image

Taconic offers an experienced team to provide information and process your orders for animal models and services. The team consists of Area Technical Representatives and Customer Service Representatives with extended access to animal production personnel and board-certified veterinarians.

Taconic's Area Technical Representatives (ATR) are geographically located across the United States, Canada and Europe to provide on-site assistance. See [Contact Us](#) for the ATR that serves your area.

Taconic's Customer Services organization manages orders and inquiries worldwide.

Customer Service

Need additional help finding and ordering Taconic products and services?

Email Us

888.TACONIC (822.6642)

Fax: 518.697.3910

+45 70 23 04 05 (Europe)

Mobile

Taconic Logo

Models +

Licensing +

Breeding +

Customer Service

Ordering and Purchasing

Taconic Processes

Connect with an expert

FAQs

Cancellation Policy

My Genotyping Account

Global Logistics and Delivery

Contact us

Supporting Image

Taconic offers an experienced team to provide information and process your orders for animal models and services. The team consists of Area Technical Representatives and Customer Service Representatives with extended access to animal production personnel and board-certified veterinarians.

Taconic's Area Technical Representatives (ATR) are geographically located across the United States, Canada and Europe to provide on-site assistance. See [Contact Us](#) for the ATR that serves your area.

Taconic's Customer Services organization manages orders and inquiries worldwide.

Customer Service

Need additional help finding and ordering Taconic products and services?

Email Us

888.TACONIC (822.6642)

Fax: 518.697.3910

+45 70 23 04 05 (Europe)

Licensing - Desktop

Taconic Logo

Subscribe My Account Search

Models Licensing Breeding

Home > Licensing

Licensing 101

Licensing 101

Licensing

In Licensing

Importing

Supporting Image

TaconicArtemis GmbH is the exclusive commercial license holder of the patent portfolio covering the use of the CreER gene switch.

These patents are issued in the US (US 6,040,430) and in Europe (EP 707 599). TaconicArtemis GmbH uses the techniques covered by these patents for its ArteMice®. Additionally TaconicArtemis GmbH is offering non exclusive internal research use licenses to these patents to pharmaceutical and biotechnology companies.

To enquire about sub-licensing possibilities please [contact us](#).

Customer Service

Need additional help finding and ordering Taconic products and services?

Email Us

888.TACONIC (822.6642)

Fax: 518.697.3910

+45 70 23 04 05 (Europe)

Tablet

Taconic Logo

Subscribe My Account Search

Models Licensing Breeding

Home > Licensing

Licensing 101

Ordering and Purchasing

Taconic Processes

Connect with an expert

FAQs

Cancellation Policy

My Genotyping Account

Global Logistics and Delivery

Contact us

Supporting Image

Taconic offers an experienced team to provide information and process your orders for animal models and services. The team consists of Area Technical Representatives and Customer Service Representatives with extended access to animal production personnel and board-certified veterinarians.

Taconic's Area Technical Representatives (ATR) are geographically located across the United States, Canada and Europe to provide on-site assistance. See [Contact Us](#) for the ATR that serves your area.

Taconic's Customer Services organization manages orders and inquiries worldwide.

Customer Service

Need additional help finding and ordering Taconic products and services?

Email Us

888.TACONIC (822.6642)

Fax: 518.697.3910

+45 70 23 04 05 (Europe)

Mobile

Taconic Logo

Models +

Licensing +

Breeding +

Licensing 101

Ordering and Purchasing

Taconic Processes

Connect with an expert

FAQs

Cancellation Policy

My Genotyping Account

Global Logistics and Delivery

Contact us

Supporting Image

Taconic offers an experienced team to provide information and process your orders for animal models and services. The team consists of Area Technical Representatives and Customer Service Representatives with extended access to animal production personnel and board-certified veterinarians.

Taconic's Area Technical Representatives (ATR) are geographically located across the United States, Canada and Europe to provide on-site assistance. See [Contact Us](#) for the ATR that serves your area.

Taconic's Customer Services organization manages orders and inquiries worldwide.

Customer Service

Need additional help finding and ordering Taconic products and services?

Email Us

888.TACONIC (822.6642)

Fax: 518.697.3910

+45 70 23 04 05 (Europe)

Resource Pages - Desktop

Taconic Logo

[Subscribe](#)
[My Account](#)

Models
Licensing
Breeding

Home > Resources > Animal Care > Animal Bedding

Resources
[✉](#) [🖨](#)

Animal Care

- Animal Bedding
- Animal Feed
- Gnotobiotic Equipment
- Taconic Transit Cage™

Applications

Cost Effectiveness

Derivation Histories

Disease Models

Help for Grant Writers

Taconic Publications

Licensing

Nomenclature

Tech Explanations

Webinars

Animal Bedding

Bedding comprised solely of hardwood chip is supplied in 30 lb. bags. The bags are made of 2-ply Kraft paper and fully autoclavable. All chip is free of splinters, excessive dust and foreign particles.

Product Image

Item Number	Description	Price
BED-NONAUTOCLV	Hardwood Chip Bedding/ Non-autoclaved	\$19.30
BED-AUTOCLV	Hardwood Chip Bedding/ Autoclaved	\$33.20

Customer Service

Need additional help finding and ordering Taconic products and services?

[✉ Email Us](#)

☎ 888.TACONIC (822.6642)

☎ Fax: 518.697.3910

☎ +45 70 23 04 05 (Europe)

Tablet

Taconic Logo

[Subscribe](#)
[My Account](#)

Models
Licensing
Breeding

Home > Resources > Animal Care > Animal Bedding

Resources
[✉](#) [🖨](#)

Animal Care

- Animal Bedding
- Animal Feed
- Gnotobiotic Equipment
- Taconic Transit Cage™

Applications

Cost Effectiveness

Derivation Histories

Disease Models

Help for Grant Writers

Taconic Publications

Licensing

Nomenclature

Tech Explanations

Webinars

Animal Bedding

Bedding comprised solely of hardwood chip is supplied in 30 lb. bags. The bags are made of 2-ply Kraft paper and fully autoclavable. All chip is free of splinters, excessive dust and foreign particles.

Product Image

Item Number	Description	Price
BED-NONAUTOCLV	Hardwood Chip Bedding/ Non-autoclaved	\$19.30
BED-AUTOCLV	Hardwood Chip Bedding/ Autoclaved	\$33.20

Customer Service

Need additional help finding and ordering Taconic products and services?

[✉ Email Us](#)

☎ 888.TACONIC (822.6642)

☎ Fax: 518.697.3910

☎ +45 70 23 04 05 (Europe)

Mobile

☰

Taconic Logo

Models +
Licensing +
Breeding +

Home > Resources > Animal Care > Animal Bedding

Resources
[✉](#) [🖨](#)

Animal Care +

- Animal Bedding
- Animal Feed
- Gnotobiotic Equipment
- Taconic Transit Cage™

Applications +

Cost Effectiveness +

Derivation Histories +

Disease Models +

Help for Grant Writers +

Taconic Publications +

Licensing +

Nomenclature +

Tech Explanations +

Webinars +

Animal Bedding

Bedding comprised solely of hardwood chip is supplied in 30 lb. bags. The bags are made of 2-ply Kraft paper and fully autoclavable. All chip is free of splinters, excessive dust and foreign particles.

Product Image

Item Number	Description	Price
BED-NONAUTOCLV	Hardwood Chip Bedding/ Non-autoclaved	\$19.30
BED-AUTOCLV	Hardwood Chip Bedding/ Autoclaved	\$33.20

Customer Service

Need additional help finding and ordering Taconic products and services?

[✉ Email Us](#)

☎ 888.TACONIC (822.6642)

☎ Fax: 518.697.3910

☎ +45 70 23 04 05 (Europe)